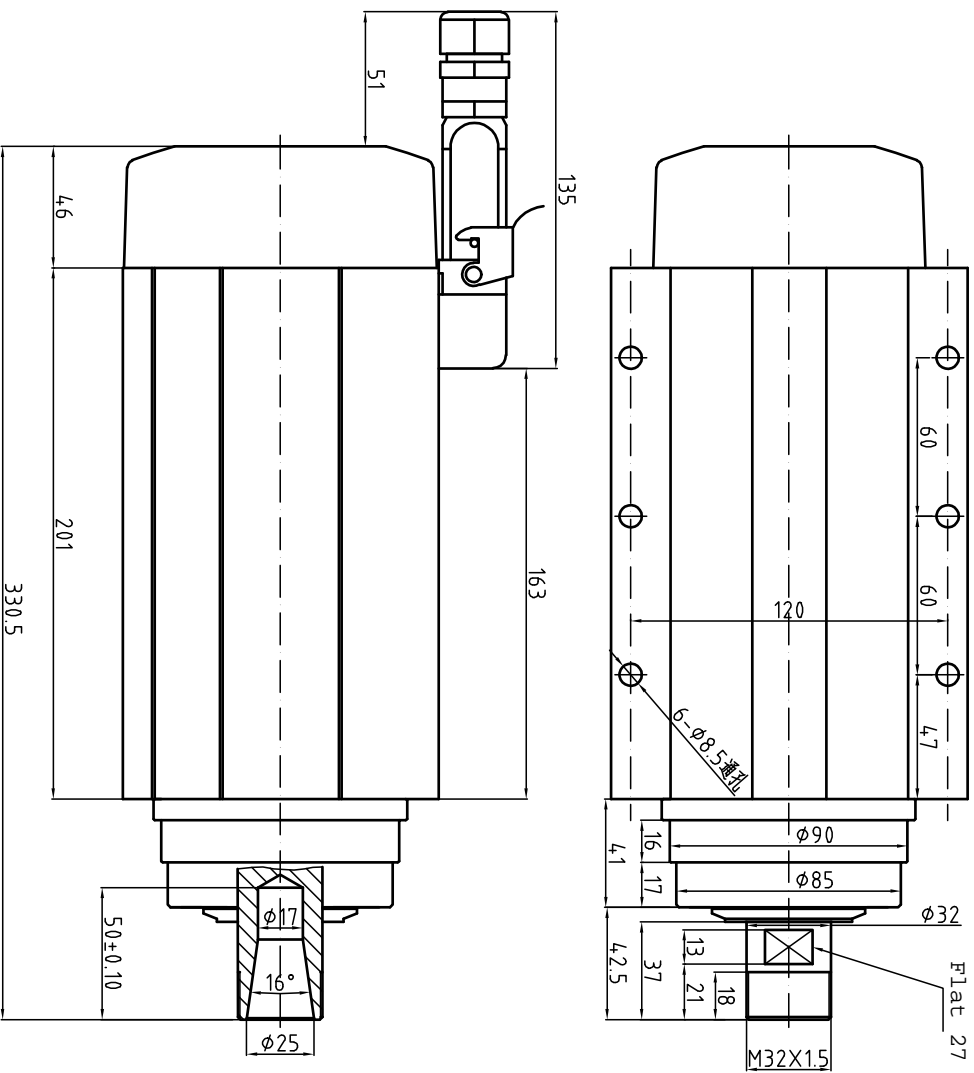
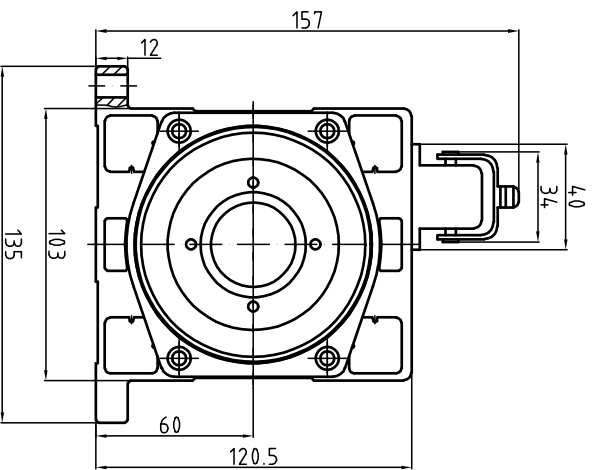
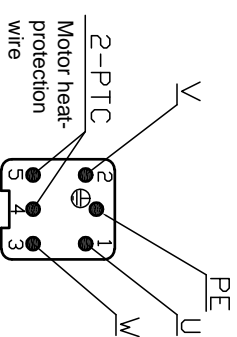


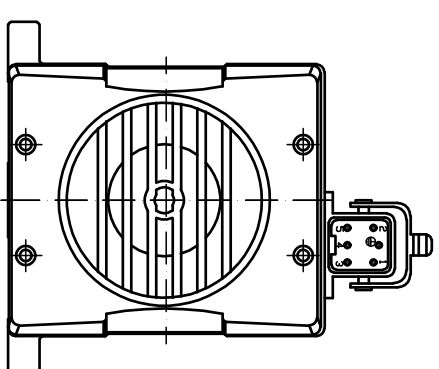
GDF60-18Z/4.5-ER25 380V Outline diagram



GDF60-18Z/4.5-ER25



Wiring description diagram



- Power 4.5 kw
 - Voltage 380 V
 - Current 9.0 A
 - Frequency 300 Hz
 - Rotating speed 18000 r/min
 - Weight: 12KG
 - ER nut: ER25
 - Cooling method: air cooling
 - Bearing lubrication method: grease lubrication
 - High-precision angular contact ball bearing: 2x7007C P4/2x7002C P4
 - Rotating direction: anticlockwise from the shaft extension end
- Special attention: thread locking adhesive shall be applied or the spring washer shall be added to prevent the looseness during the installation of the fastening screw!

PTC three-core thermistor parameter	
DC power supply	Maximum DC25V/10mA
-20~25℃	≤300Ω
≤90℃	≤750Ω
105℃	≤1650Ω
110℃	Rated operating temperature
115℃	≥3990Ω
≥125℃	≥12KΩ
≤160℃	Maximum storage temperature